

# Frog Pond Ridge at Frog Pond West

Presentation to the Wilsonville Design Review Board  
August 31, 2020



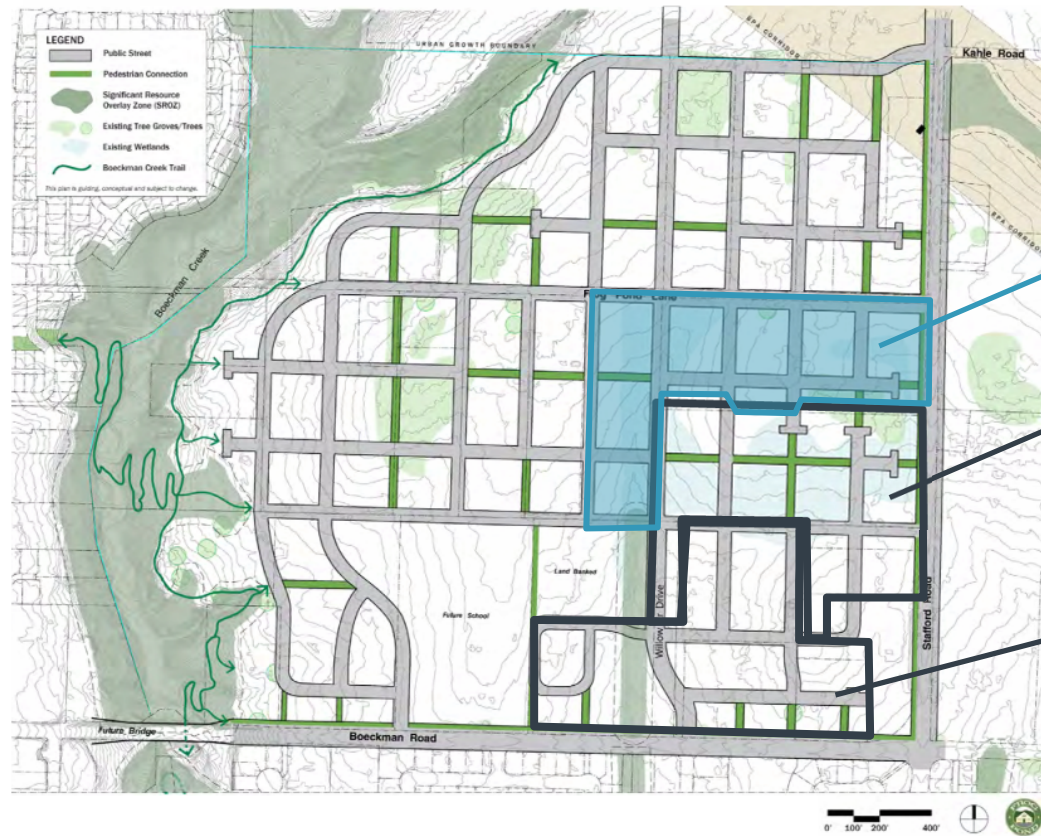
## OTAK PROJECT TEAM

- Dan Grimberg, West Hills Land Development
- Kristi Hosea, West Hills Land Development
- Mike Robinson, Shwabe, Williamson & Wyatt
- Mike Peebles, PE, Otak
- Li Alligood, AICP, Otak
- Steve Dixon, PLA, Otak

## PROJECT INFORMATION

- 16.25 acres
- 2 properties and portions of 2 others (Frog Pond Meadows and School District)
- 71 lots

# BACKGROUND



Frog Pond Ridge

Frog Pond Meadows

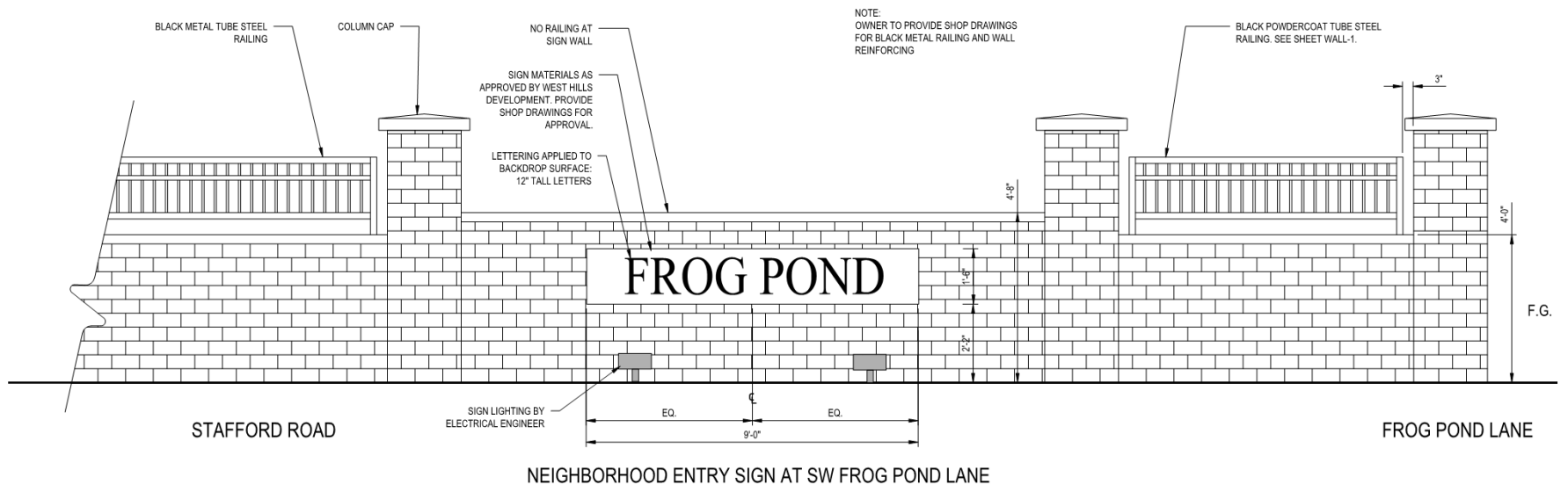
Stafford Meadows

# EXISTING CONDITIONS





# FROG POND LANE GATEWAY



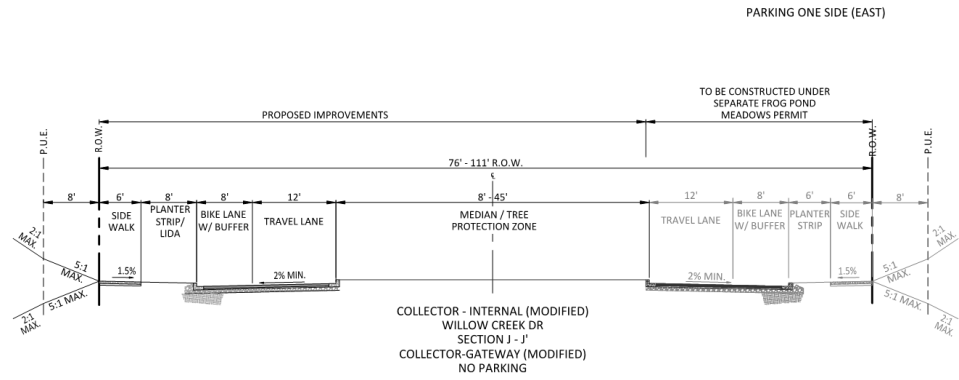
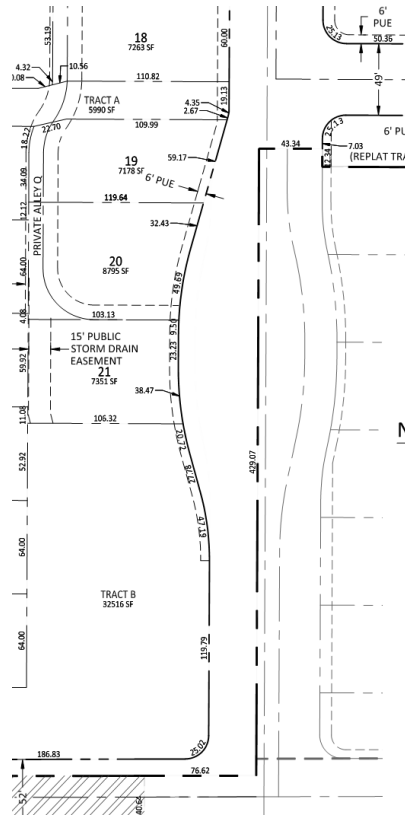


# WILLOW CREEK DRIVE





# WILLOW CREEK DRIVE



PARKING ONE SIDE (EAST)

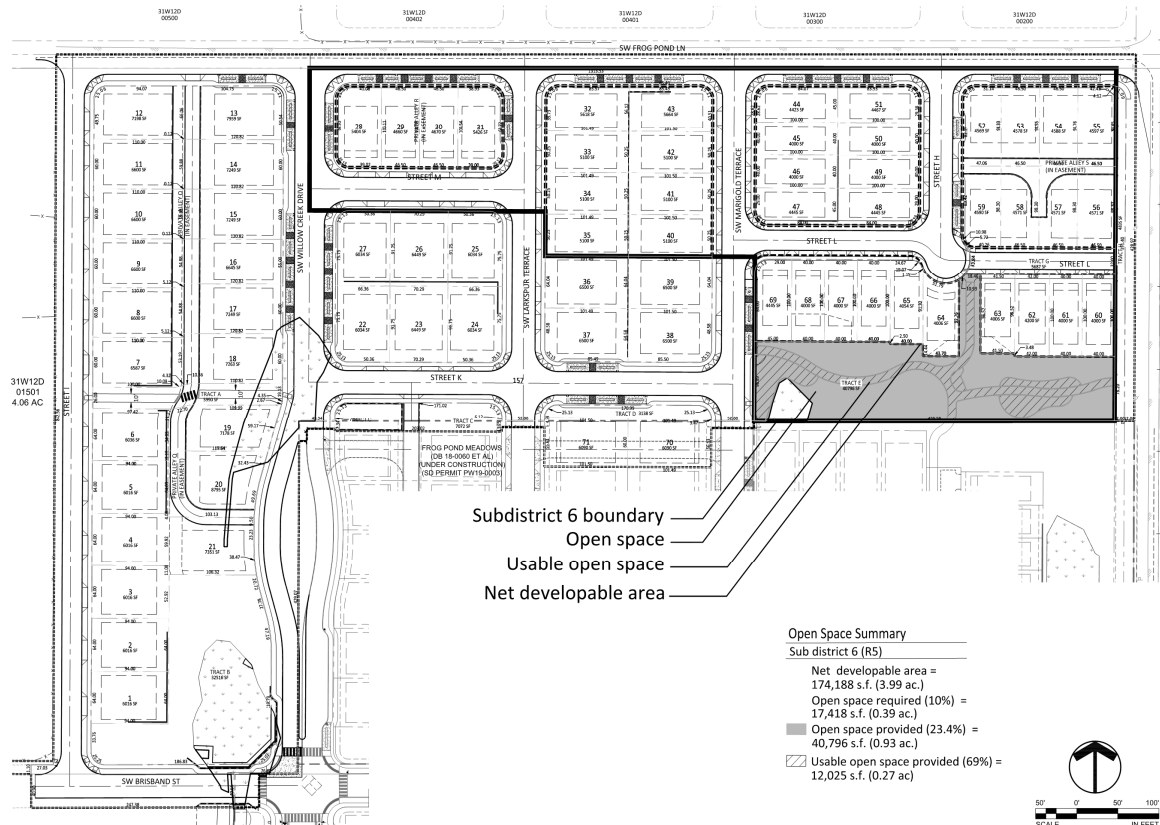
TO BE CONSTRUCTED UNDER SEPARATE FROG POND MEADOWS PERMIT

PROPOSED IMPROVEMENTS

76' - 111' R.O.W.

COLLECTOR - INTERNAL (MODIFIED)  
WILLOW CREEK DR  
SECTION J - J'  
COLLECTOR-GATEWAY (MODIFIED)  
NO PARKING

# OPEN SPACE



QUESTIONS?